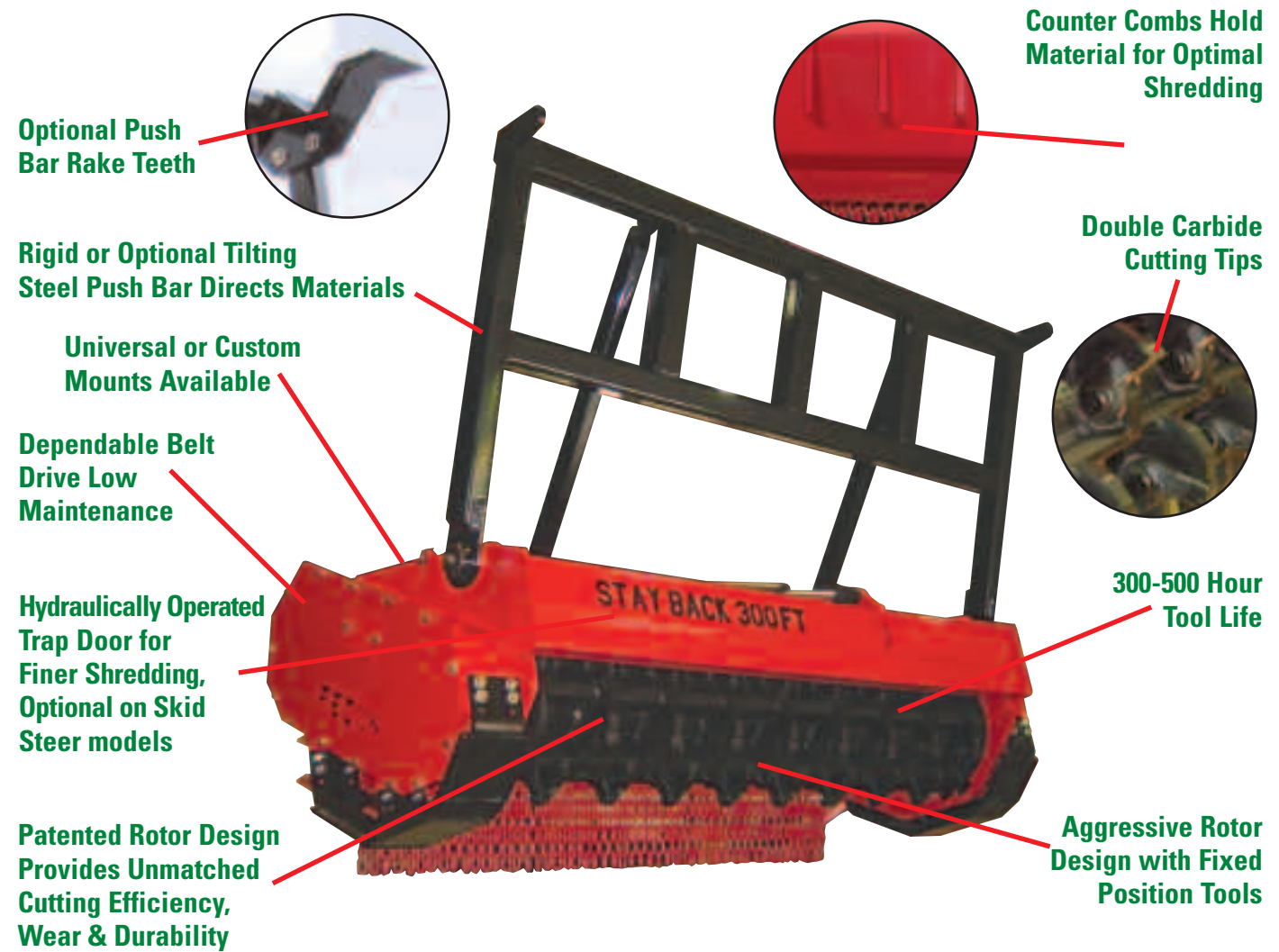


The Bull Hog®



APPLICATIONS

- Dense brush and undergrowth
- Stumps and out-of-ground root balls
- Brush and yard waste piles
- Logging scrap and slash piles
- Shred whole trees, standing or fallen

ADVANTAGES

- Safer than the average rotary mower
- Shreds material to any texture, course or fine
- Processes any size wood or stump quickly and easily
- 300-500 hour tool life
- Heaviest construction in the industry
- 50-550 HP

PATENT NUMBERS #5,823,238, #5,992,483 AND #5,582,353

Attachment Advantages



Root Grapple ADVANTAGES

- Rigid frame construction to handle the difficult applications
- Serrated AR400 front tines for ripping and grabbing
- Dual independent arms for awkward shaped material



Bull Hog® ADVANTAGES

- 300-500 hour tool life
- Environmentally friendly
- Provides a clean park-like effect
- Heavy duty and high flow Skid Steers
- Safe and economical



Shear ADVANTAGES

- Heavy-duty cylinders with large cylinder rods and durability allows faster cycle times
- Easily adjustable knife blades
- Strong, yet lighter weight to minimize ground PSI



Rotating Front Grapple ADVANTAGES

- Rated for 9000lbs
- Skid Steer quick attach
- Optional winch rated for 9000lbs
- Extremely heavy frame for long-term performance



Ripper ADVANTAGES

- Designed to rip through soil or frozen ground
- Replaceable teeth
- Repositionable teeth
- Swivel teeth allow machine to turn



Stump Hog™ ADVANTAGES

- Wheel telescopes 12" for easy reach
- Fast and easy installation
- Wide 70" swing
- Anti-lash feature
- Compatible with high-flow Skid Steer, Excavator, or forestry prime movers



Rear Grapple ADVANTAGES

- Chrome pins & hardened steel bushings
- Larger 60" wide opening, 360° rotation
- All hydraulic hoses rated at 4,000psi
- Safe working load 2810 lbs.
- Keeps log secure while reaching
- 60° swing left and right



Soil Hog™ ADVANTAGES

- Hydraulic and PTO powered attachments designed to mix, mill and grind soils, asphalt, concrete, roots and stumps
- Superior mixing and blending
- Numerous sizes and horsepower ranges



Grapple Bucket ADVANTAGES

- Dual independent arms for awkward shaped material
- Rigid frame construction for difficult applications

• Operators cab must be protected with both properly maintained 1/2" LEXAN® Glass (or equal) and Falling Object Protection.
• Safety Is The Responsibility Of The Operator
• Always insure that your carrier manufacturers safety features, including Falling Object Protection, meet your job safety requirements.
• Specifications subject to change without notice
• LEXAN® is a registered trademark of General Electric Company

The Bull Hog®



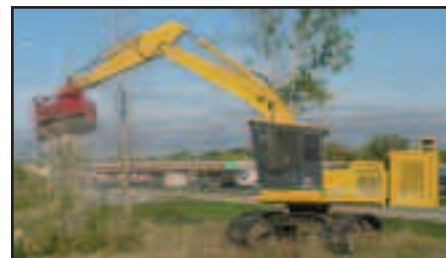
Bring It On!



Do It All!

Shred Brush, Undergrowth, Trees, Stumps, Roots, Yard Waste, Logging Scraps, and Slash.

The Bull Hog is the one machine that can do it all. The Bull Hog reduces brush and wood quickly, safely, and at the lowest possible cost. Hydraulically powered or used in conjunction with a tractor PTO, the Bull Hog is safer and more versatile than the average rotary mower. Its heavy duty construction and its endless number of applications make the Bull Hog the most practical wood shredder in the world.



Land Clearing & Right-of-Way (R.O.W.)

The Bull Hog quickly and easily cuts brush, trees, stumps, and so much more, down to ground level. It is most commonly used for right-of-ways, fire breaks, fuel reduction, commercial development, slash reduction, and flood control channels. There are no limits to the size or quantity of material that can be processed. And the Bull Hog will shred any material into a variety of textures, from coarse to fine.



Municipal & Agricultural

The Bull Hog is optimal for clearing lots, storm debris, right-of-ways, recreational trails, golf courses, parks, orchard pruning, fence rows, and pasture restoration. It can even be used to process municipal brush and yard waste. When combined with a tractor-loader or skid-loader the Bull Hog package becomes both the grinder and windrow turner for small composting operations. Farmers, ranchers, and municipalities have a great opportunity with the Bull Hog.



Forest Fire & Urban Interface

The Bull Hog is ideal for reducing fuel loads in the urban interface and forests to prevent or fight fires. Dense brush, large or small diameter trees, and slash piles can be reduced to a coarse mulch above the soil or a fine mulch incorporated in to the soil surface. Bull Hogs can thin timber stands or clear around structures on both public and private lands with minimal environmental impact. When mounted on the appropriate carrier the Bull Hog economically reduces the number of people and machines needed for cutting fire lines on active fires or for rehabilitation of the forest after a fire.

Technical Specifications

MODEL	MOTOR QTY	MOTOR SIZE	HYDRAULIC FLOW OR PTO	NUMBER OF TOOLS	WIDTH/MAX CUT	STANDARD WEIGHT	REQ. LEXAN THICKNESS
SKIDSTEER HEAVY DUTY							
BH62SS	1	63	27-45gpm	24	62/50	2050	1/4"
BH74SS	1	63	27-45gpm	30	74/60	2250	1/4"
BH85SS	1	63	27-45gpm	36	85/70	2550	1/4"
EXCAVATOR HEAVY DUTY							
BH47EXC-1	1	63	30-35gpm	18	47/32	2200	1/2"
BH47EXC-2	1	80	38-45gpm	18	47/32	2200	1/2"
BH62EXC-1	1	63	30-35gpm	24	62/50	2550	1/2"
BH62EXC-2	1	80	38-45gpm	24	62/50	2550	1/2"
BH74EXC-1	1	63	30-35gpm	30	74/60	2850	1/2"
BH74EXC-2	1	80	38-45gpm	30	74/60	2850	1/2"
EXCAVATOR SEVERE DUTY							
BH40EXC-1	1	63	30-35gpm	18	47/32	3000	1/2"
BH40EXC-2	1	80	38-45gpm	18	47/32	3000	1/2"
BH40EXC-3	2	80	80-90gpm	18	47/32	3000	1/2"
BH80EXC-1	1	80	38-45gpm	30	72/56	4400	1/2"
BH80EXC-2	2	63	50-65gpm	30	72/56	4400	1/2"
BH80EXC-3	2	80	80-90gpm	30	72/56	4400	1/2"
BH250EXC-1	2	63	60-65gpm	30	75/56	6500	1/2"
BH250EXC-2	2	80	80-90gpm	30	75/56	6500	1/2"
BH250EXC-3	2	125	140gpm	30	75/56	6500	1/2"
BH250EXC-4	2	200	180gpm	30	75/56	6500	1/2"
GROUND (WIDE) HEAVY DUTY							
BH74PTO	N/A	N/A	540rpm@80-90hp or 1000rpm@90-100hp	30	74/60	2300	1/2"
BH74H	1	63	27-45gpm	30	74/60	2300	1/2"
BH85PTO	N/A	N/A	1000rpm	36	85/70	2900	1/2"
BH85H-1	2	63	50-65gpm	36	85/70	2900	1/2"
BH85H-2	2	80	80-90gpm	36	85/70	2900	1/2"
BH99PTO	N/A	N/A	1000rpm	48	99/85	3900	1/2"
BH99H-1	2	63	50-65gpm	48	99/85	3900	1/2"
BH99H-2	2	80	80-90gpm	48	99/85	3900	1/2"
GROUND (WIDE) SEVERE DUTY							
BH120H-1	2	63	50-65gpm	48	99/85	4900	1/2"
BH120H-2	2	80	80-90gpm	48	99/85	4900	1/2"
BH250PTO	N/A	N/A	1000rpm	48	107/88	7200	1/2"
BH250H-1	2	63	60-65gpm	48	107/88	7200	1/2"
BH250H-2	2	80	80-90gpm	48	107/88	7200	1/2"
BH250H-3	2	125	140gpm	48	107/88	7200	1/2"
BH250H-4	2	200	180gpm	48	107/88	7200	1/2"
BH350PTO	N/A	N/A	1000rpm	48	108/88	8200	1/2"
BH350/3000PTO	N/A	N/A	1000rpm	64	108/88	10500	1/2"
BH350H-1	2	125	140gpm	48	108/88	8200	1/2"
BH350H-2	2	200	180gpm	48	108/88	8200	1/2"
BH350H/3000	2	200	180gpm	64	108/88	10500	1/2"

Bull Hog® -The #1 Choice in Mulcher Attachments

Skidsteer



BOBCAT



ASV



GEHL



CAT



JOHN DEERE



SUPERTRAK

Track & Excavator



CAT



SUPERTRAK



TIGERCAT



FECON FTX140



FECON FTX250



FECON FTX440

Rubber Tire



FRANKLIN



BARKO



GEOBOY



HYDRO-AX



SUPERTRAK



TIGERCAT

*The Bull Hog attachment is not limited to the above models.

FECON

3460 Grant Drive, Lebanon, Ohio 45036 • Toll Free: 800.528.3113 • www.fecon.com

FECON