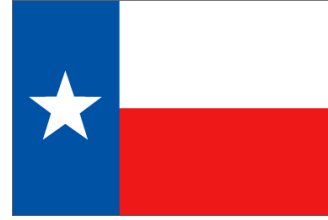


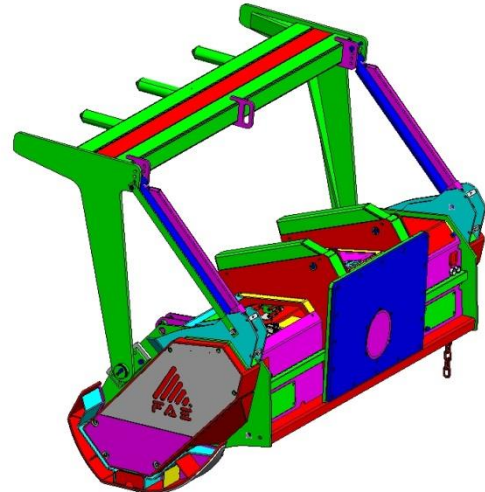
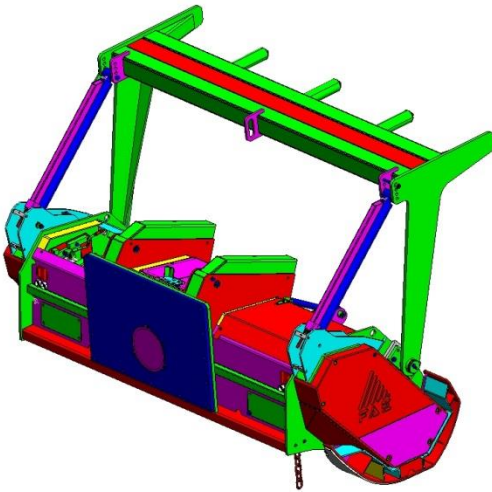
Attachment designed specifically for high abrasive TX environment



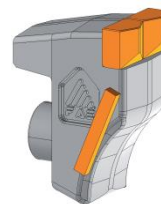
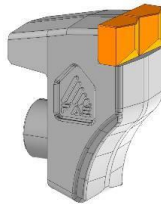
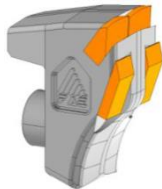
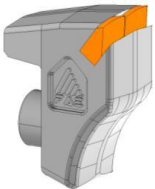
300/U TX

Forestry mulcher for special built hydraulic driven Prime Movers with power range between 200 and 400 HP.

Standard equipment: Dual side transmission, hydraulic hood, customized hydraulic transmission, hydraulic controlled guide frame.



Model	Power HP Min-Max	Requirements Flow gal/min Min-Max	Pressure PSI Min-Max	Working width inches	Overall width inches	Weight lbs	Grinding diameter inches (max)	Teeth Qty Type C+ C/SS
300U/ 225 TX	200-4000	100-150	3000-5000	91	105	6,000	16	80 +2
300U/ 250 TX	200-400	100-150	3000-5000	100	114	6,300	16	92+2



Tooth type C (Standard)

Tooth type C/SD (Option)

Tooth type STCL (Option)

Tooth type C/SS (side scraper)



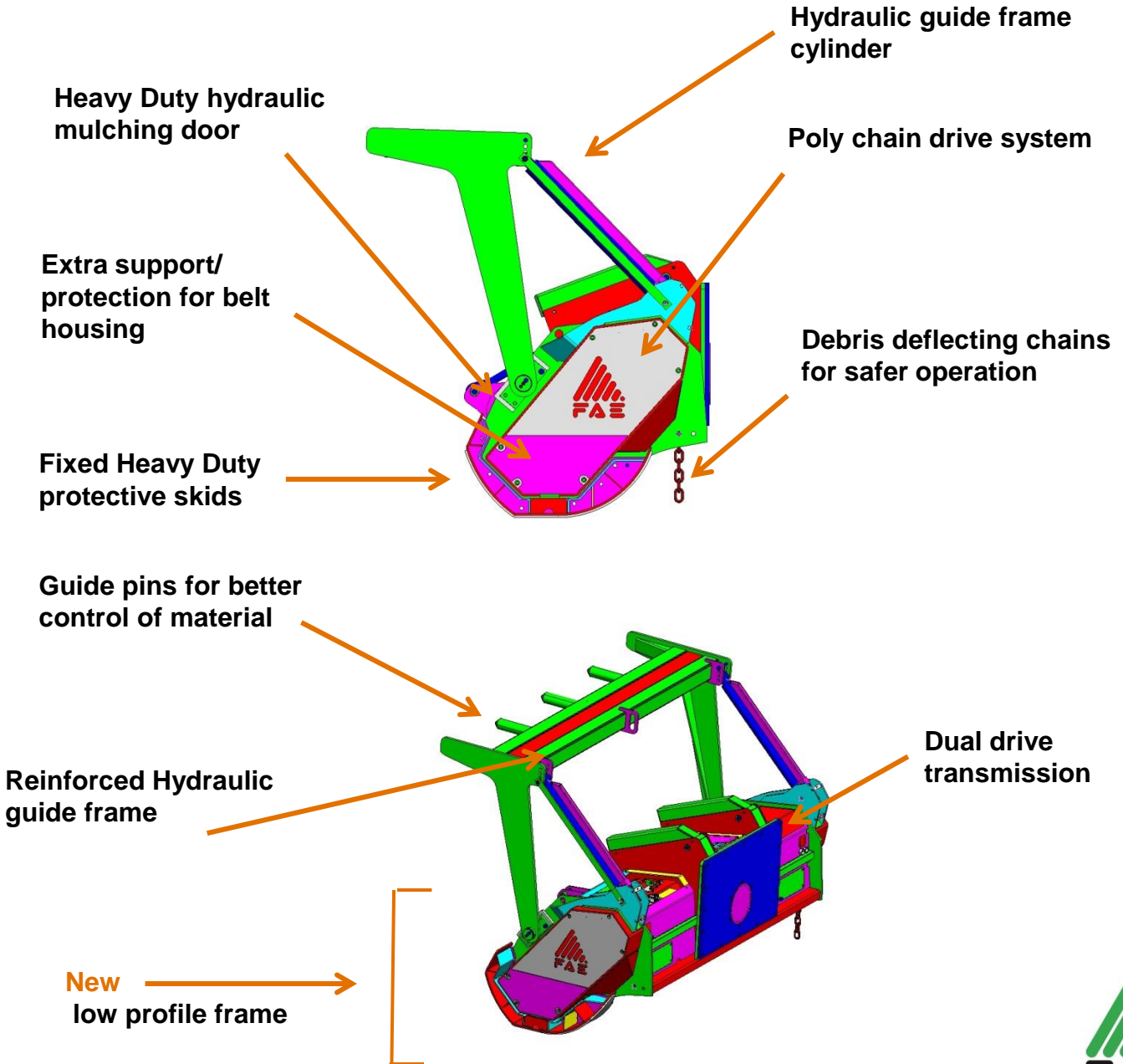


NEW Heavy duty prime mover forestry mulcher

New body contains Weldox steel to improve strength and durability



We use Hardox steel in areas exposed to wear



LAND CLEARING

